

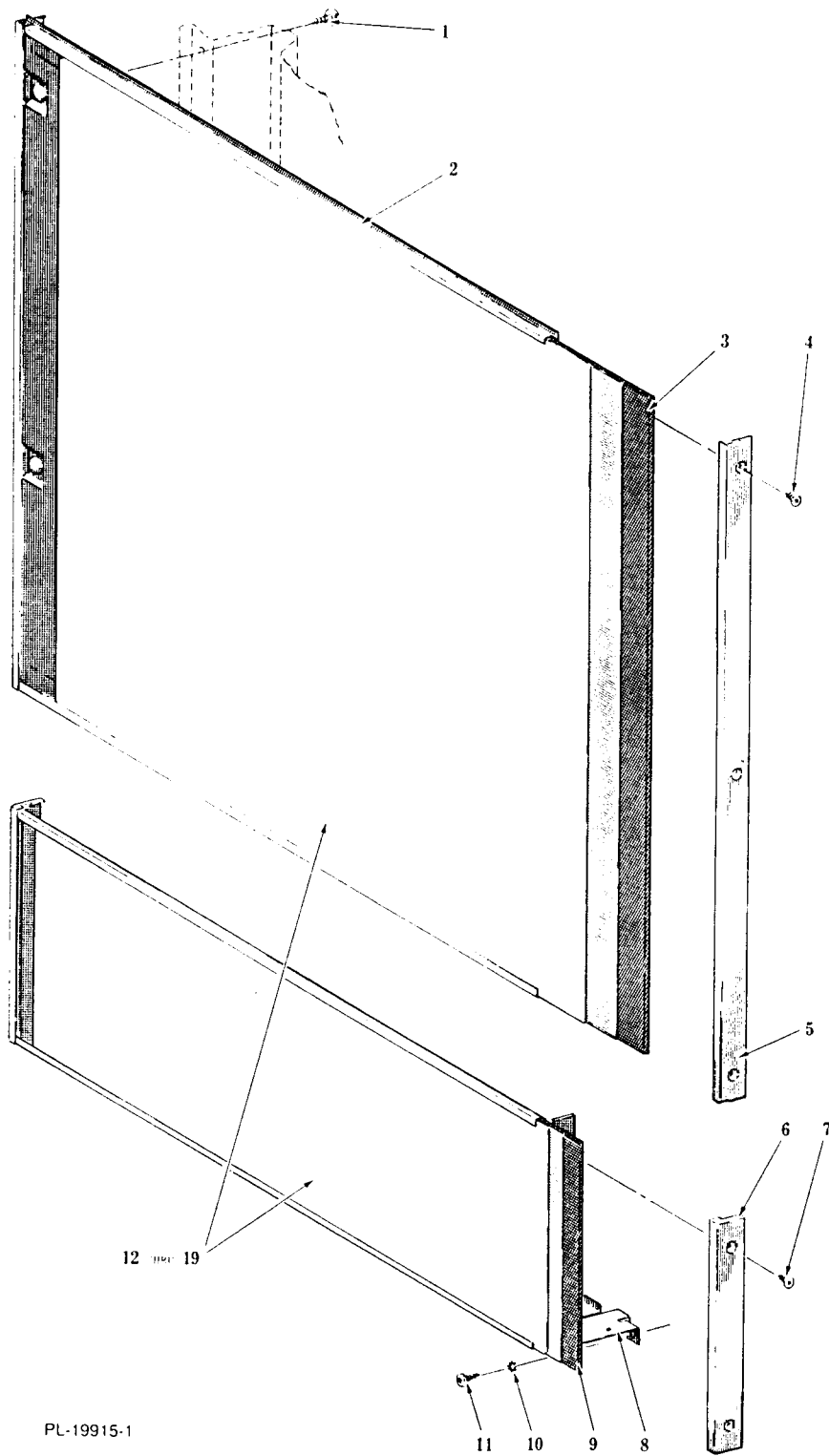
Catalog of

REPLACEMENT PARTS

KitchenAid®

KD-21A DISHWASHERS

ML-42088	KDC-21A
ML-42089	KDI-21A
ML-42114	KDC-61A
ML-42115	KDB-21
ML-42037	KDB-21SE
ML-42119	KDC-21AD
ML-42120	KDI-21AD



PL-19915-1

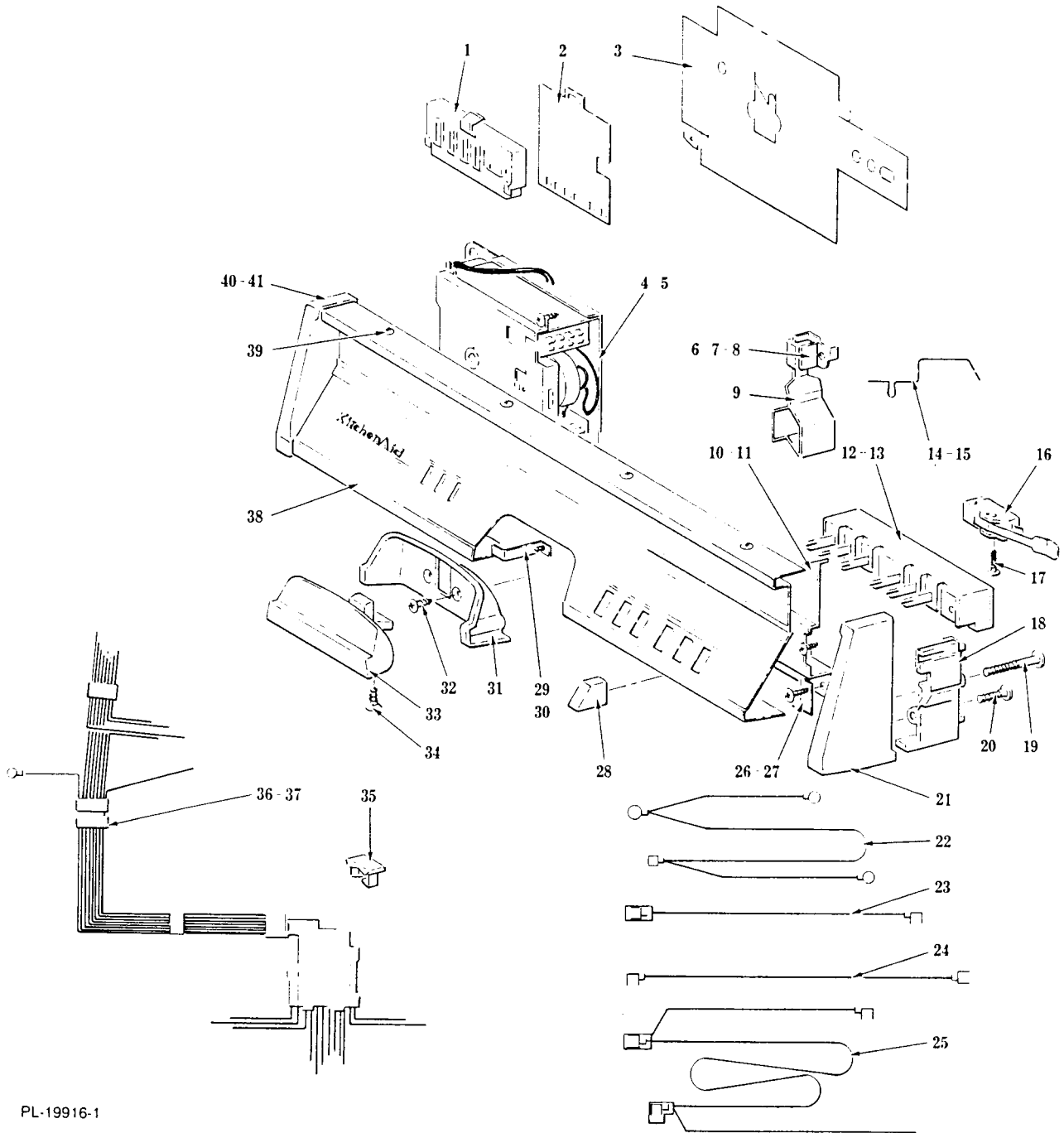
FRONT PANEL UNIT

FRONT PANEL UNIT

**1 Screw - Washer Assy
*2 Upper Mounting Panel & Trim Assy
*3 Filler - Upper Panel
**4 Self-Tapping Screw 6 x 1/4 Phil. Flat Hd., Type AB
5 241482 Side Trim - Upper Panel
6 241484 Side Trim - Lower Panel
**7 Self-Tapping Screw 6 x 1/4 Phil. Flat Hd., Type AB
*8 Lower Mounting Panel & Trim Assy
*9 Filler - Lower Panel
*10 Lock Washer 10 Ext. Shakeproof (Left Side for Ground)
*11 Self-Tapping Screw 10 x 1/2 Phil. Truss Hd., Type AB
12 241677-3 Kit- Panel Inserts (FA/CO)
13 241677-4 Kit- Panel Inserts (SST)
14 241677-5 Kit- Panel Inserts (AL/WH)
15 251677-6 Kit- Panel Inserts (HT/OB)
16 241677-7 Kit- Panel Inserts (PL/TO)
17 251677-8 Kit- Panel Inserts (SA/OB)
18 241677-9 Kit- Panel Inserts (SI/OB)
*19 Grommet - Panel Mount

*Not available. Order Vari Front Panel Pak Kit (ML-41737).

**Not available. Order Front Panel Screws Kit (241756).

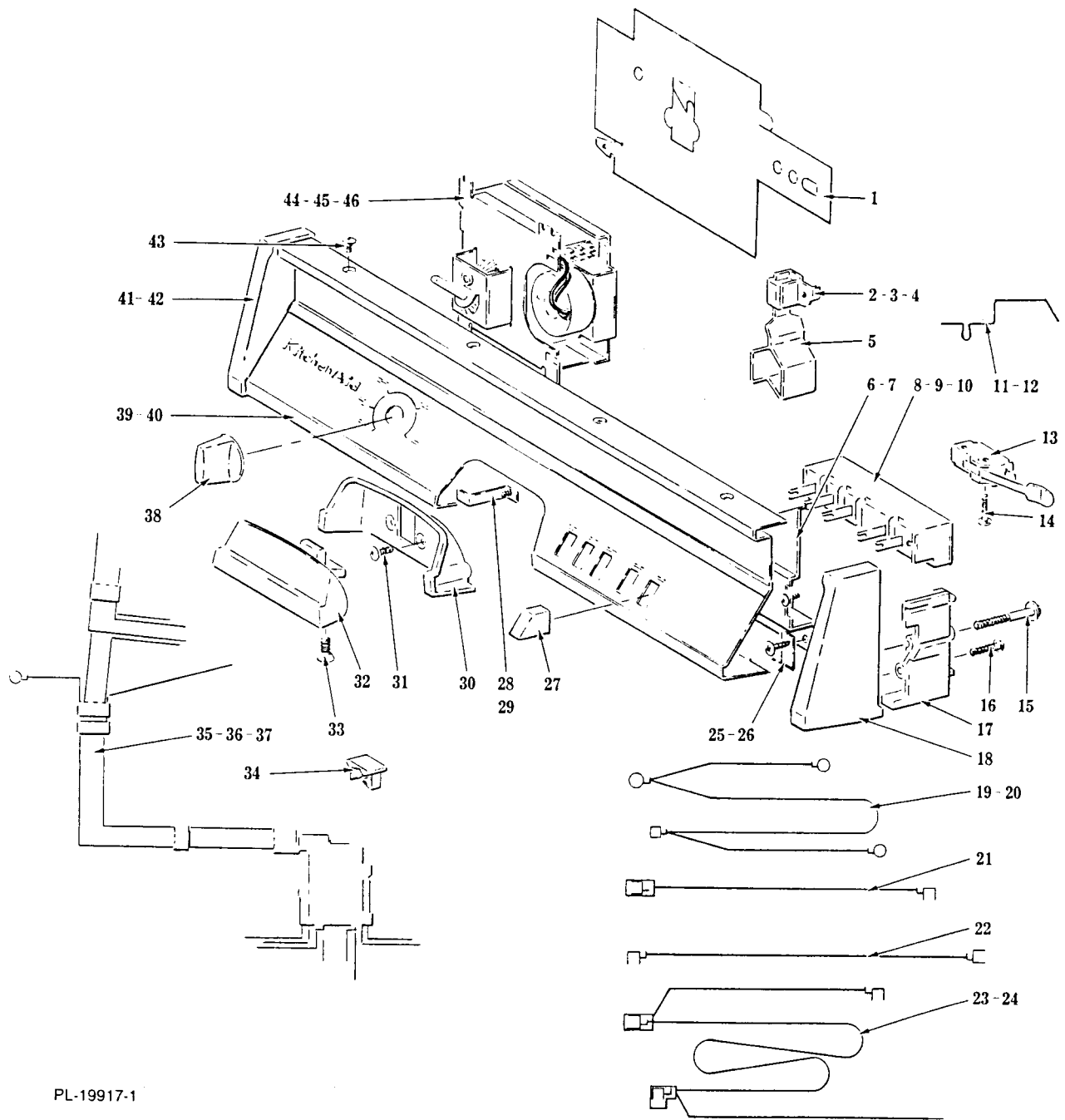


PL-19916-1

CONTROL PANEL UNIT (KDI-21A)

CONTROL PANEL UNIT (KDI-21A)

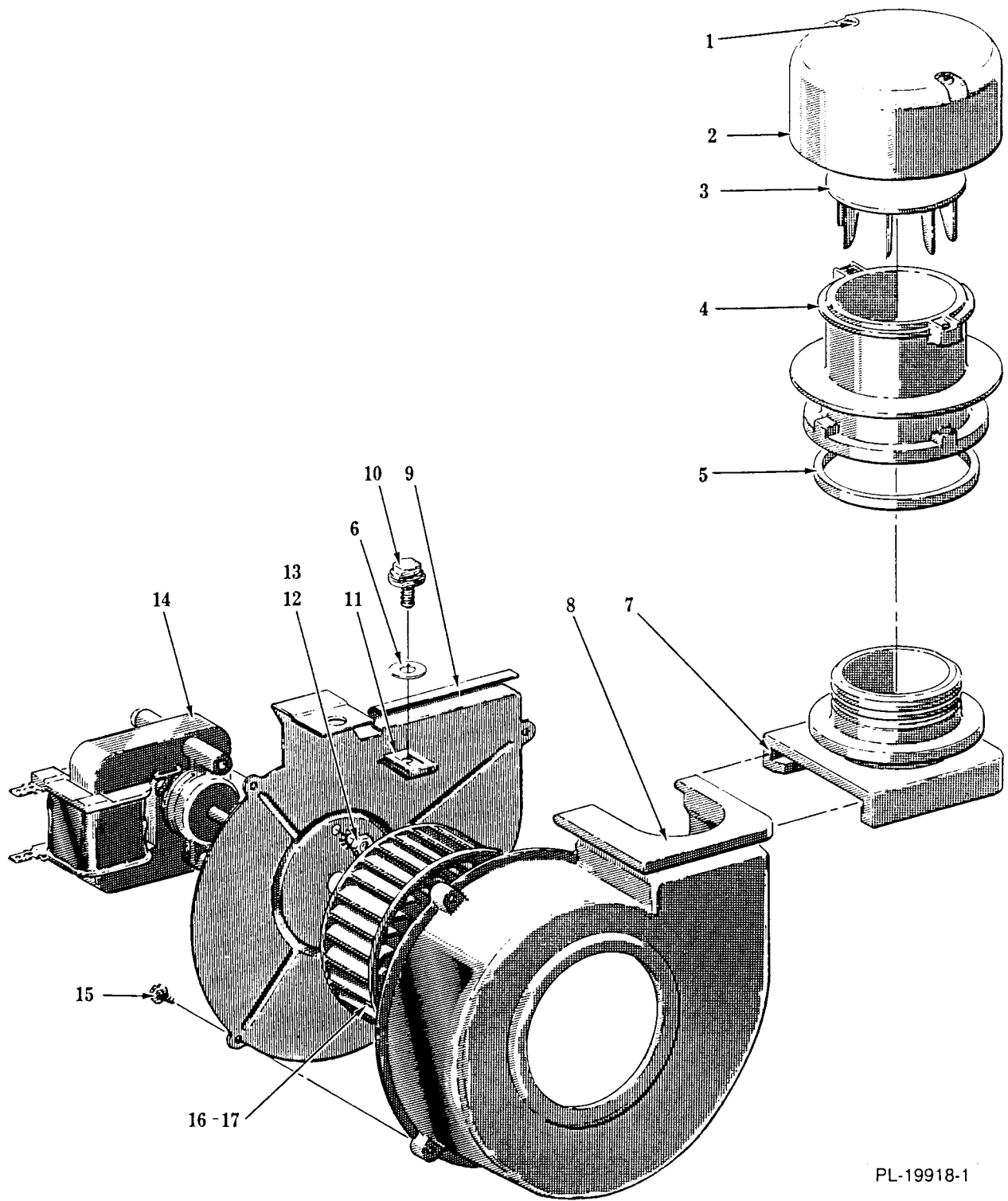
1	242964	Light Package
2	242599	Insulator- Light Package
3	242870	Insulator- Latch Area
4	242960	Timer Assy. (115 V., 60 Hz.)
5	SD-13-11	Self-TappingScrew 8-18 x 1/2 Phil. Pan Hd., Type BT
6	242632	Anchor- Cancel Spring
7	108984	Spacer- Cancel Spring
8	RS-30-13	Pop Rivet 1/8 Open End
9	242425	Spring- Switch Cancel
10	242424	Bracket- Program Switch
11	SD-13-11	Self-Tapping Screw 8-18 x 1/2 Phil. Hd., Type BT
12	242954	Switch- Program
13	SD-32-29	Self-Tapping Screw 6-32 x 3/8 Phil. Truss Hd., Type 17
14	242980	Spring- Door Interlock
15	SD-36-29	Self-Tapping Screw 10-16 x 1/2 Phil. Truss Hd., Type AB
16	105437	Switch- Interlock
17	SD-9-32	Self-Tapping Screw 6-32 x 7/8 Phil. Pan Hd., Type F
18	242494-1	Spacer- End Cap (R.H.)
19	242436	Screw & Washer Assy
20	SD-36-23	Self-Tapping Screw 8-32 x 7/8 Phil. Pan Hd., Type TT
21	242413-1	Cap- End (R.H.)
22	242968	Wiring Harness (Ground)
23	242777	Lead (Fill Control to Fill Valve)
24	241315	Lead Assy. (Interlock Switch to Program Switch)
25	242967	Wiring Harness (Lower Common)
26	240220	Clip- Grounding (Front Panel)
27	SD-13-11	Self-Tapping 8-18 x 1/2 Phil. Pan Hd., Type BT
28	242406-1	Button- Program Switch
29	242418	Bracket- Panel Reinforcement
30	SD-35-80	Self-Tapping Screw 6-20 x 3/8 Phil. Truss Hd., Type BT
31	242422-1	Trim- Handle
32	SC-117-52	Mach. Screw 8-32 x 1/2 Phil. Flat Hd
33	242414	Handle- Latch
34	SC-17-14	Mach. Screw 10-32 x 5/8 Phil. Oval Hd
35	242641	Clip- Harness Guide
36	242970	Wiring Harness (Main)
37	SD-8-43	Self-Tapping Screw 8-18 x 3/8 Phil. Rd. Hd., Type B
38	242972-2	Control Panel
39	SD-22-27	Self-Tapping Screw 6-20 x 3/8 Phil. Oval Hd., Type AB
40	242494-2	Spacer - End Cap (L.H.)
41	242413-2	Cap- End (L.H.)
	242973-2	Control Panel & End Caps Assy. (Incls. items 18, 20, 21, 29,
30, 31, 38, 40 & 41)		



PL-19917-1

**CONTROL PANEL UNIT
(KDB-21, KDC-21A & KDC-61A)**

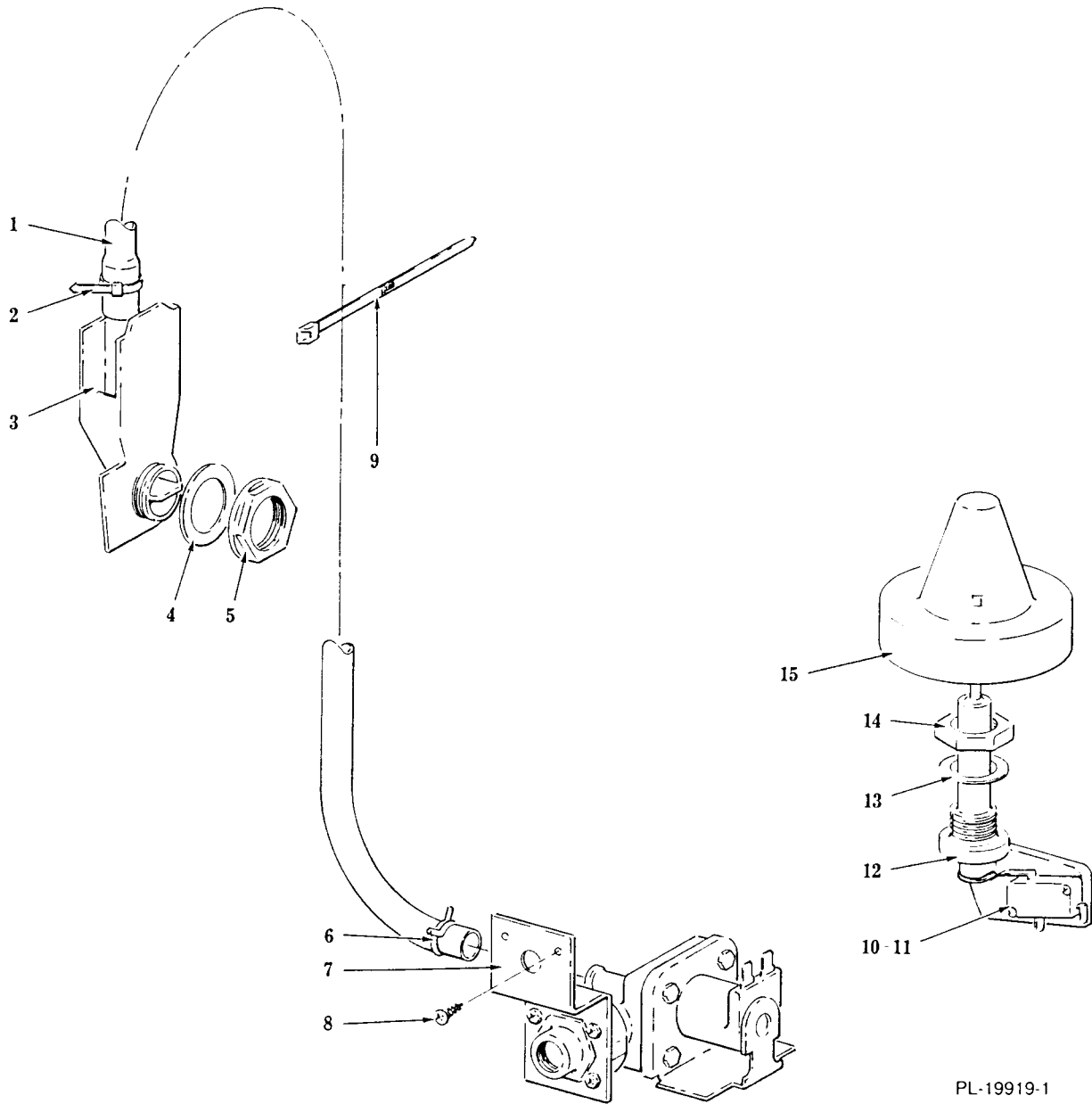
1	242870	Insulator- Latch Area
2	242632	Anchor- Cancel Spring
3	108984	Spacer- Concel Spring
4	RS-30-13	Pop Rivet 1/8 Open End
5	242425	Spring- Switch Cancel
6	242424	Bracket- Program Switch
7	SD-13-11	Self-Tapping Screw 8-18 x 1/2 Phil. Pan Hd., Type BT
8	242433	Switch- Program (KDB-21)
9	242955	Switch- Program (KDC-21A & KDC-61A)
10	SD-32-29	Self-Tapping Screw 6-32 x 3/8 Phil. Truss Hd., Type 17
11	242980	Spring- Door Interlock
12	SD-36-29	Self-Tapping Screw 10-16 x 1/2 Phil. Truss Hd., Type AB
13	105437	Switch- Interlock
14	SD-9-32	Self-Tapping Screw 6-32 x 7/8 Phil. Pan Hd., Type F
15	242436	Screw & Washer Assy
16	SD-36-23	Self-Tapping Screw 8-32 x 7/8 Phil. Pan Hd., Type TT
17	242494-1	Spacer- End Cap (R.H.)
18	242413-1	Cap- End (R.H.)
19	243020	Wiring Harness (Grounding) (KDB-21)
20	242968	Wiring Harness (Grounding) (KDC-21A & KDC-61A)
21	242777	Lead (Fill Control to Fill Valve)
22	241315	Lead Assy. (Interlock Switch to Program Switch)
23	243018	Wiring Harness (Lower Common) (KDB-21)
24	242967	Wiring Harness (Lower Common) (KDC-21 & KDC-61A)
25	240220	Clip- Grounding (Front Panel)
26	SD-13-11	Self-Tapping Screw 8-18 x 1/2 Phil. Pan Hd., Type BT
27	242406-2	Button- Program Switch
28	242418	Bracket- Panel Reinforcement
29	SD-35-80	Self-Tapping Screw 6-20 x 3/8 Phil. Truss Hd., Type BT
30	242422-2	Trim- Handle
31	SC-117-52	Mach. Screw 8-32 x 1/2 Phil. Flat Hd
32	242414	Handle- Latch
33	SC-17-14	Mach. Screw 10-32 x 5/8 Phil. Oval Hd
34	242641	Clip- Harness Guide
35	243019	Wiring Harness (Main) (KDB-21)
36	242969	Wiring Harness (Main) (KDC-21A & KDC-61A)
37	SD-8-43	Self-Tapping Screw 8-18 x 3/8 Phil. Rd. Hd., Type B
38	241537	Knob - Timer
39	242972-3	Control Panel (KDB-21)
40	242972-1	Control Panel (KDC-21A & KDC-61A)
41	242494-2	Spacer - End Cap (L.H.)
42	242413-2	Cap - End (L.H.)
43	SD-22-27	Self-Tapping Screw 6-20 x 3/8 Phil. Oval Hd., Type AB
44	242993	Timer Assy. (115 V., 60 Hz.) (KDB-21)
45	242959	Timer Assy. (115 V., 60 Hz.) (KDC-21A & KDC-61A)
46	SD-13-11	Self-Tapping Screw 8-18 x 1/2 Phil. Pan Hd., Type BT
	242973-3	Control Panel & End Cap Assy. (KDB-21) (Incls. items 16, 17, 18, 28, 29, 30, 39, 41 & 42)
	242973-1	Control Panel & End Cap Assy. (KDC-21A & KDC-61A) (Incls. items 16, 17, 18, 28, 29, 30, 40, 41 & 42)



PL-19918-1

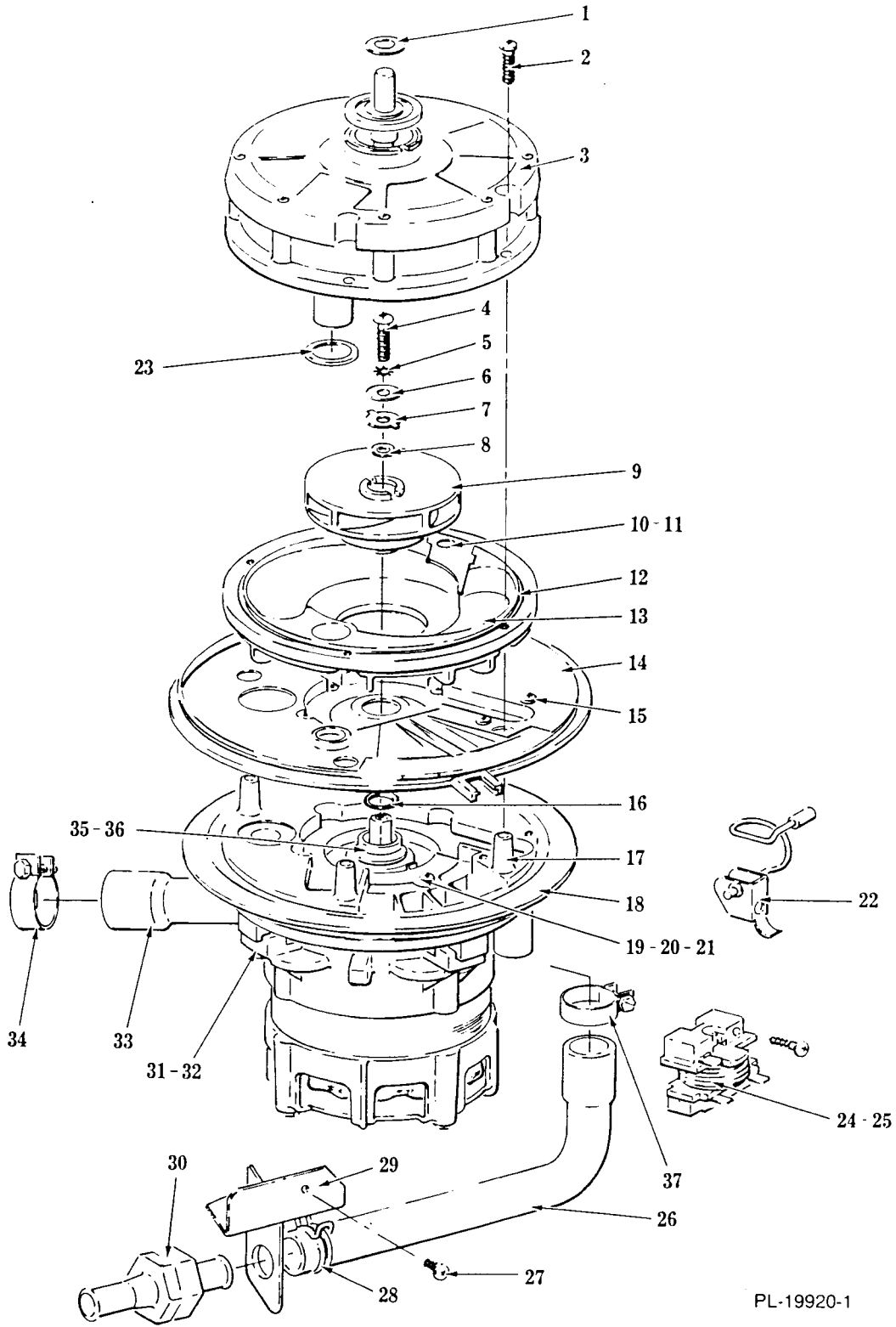
FLO-THRU DRYING UNIT

1	SD-33-23	Self-Tapping Screw 6-32 x 7/8 Phil. Rd. Hd., Type B
2	241075	Cap- Air Inlet
3	241078	Damper- Air Inlet
4	241076	Tube- Air Inlet
5	241074	Seal- Air Inlet
6	241316	Spacer- Blower Mounting
7	241077	Support- Blower
8	241081	Housing- Blower
9	241080	Plate- Blower Motor Mounting
10	241143	Screw- Blower Retainer
11	241815	Speednut- Type "U"
12	NS-9-7	Mach. Nut 6-32 Hex
13	WL-7-2	Lock Washer 6 Ext. Shakeproof
14	241220	Motor- Blower (115 V., 60 Hz.) (Incls. Screws)
15	SD-19-29	Self-Tapping Screw 6 x 1/2 Phil. Pan Hd., Type B
16	241104	Blower Wheel Assy. (Incls. item 17)
17	241084	Retaining Ring
	241082	Blower Assy. Unit (Incls. items 8, 9, 11, 12, 13, 14, 15 & 16)



FILL AND OVERFILL UNIT

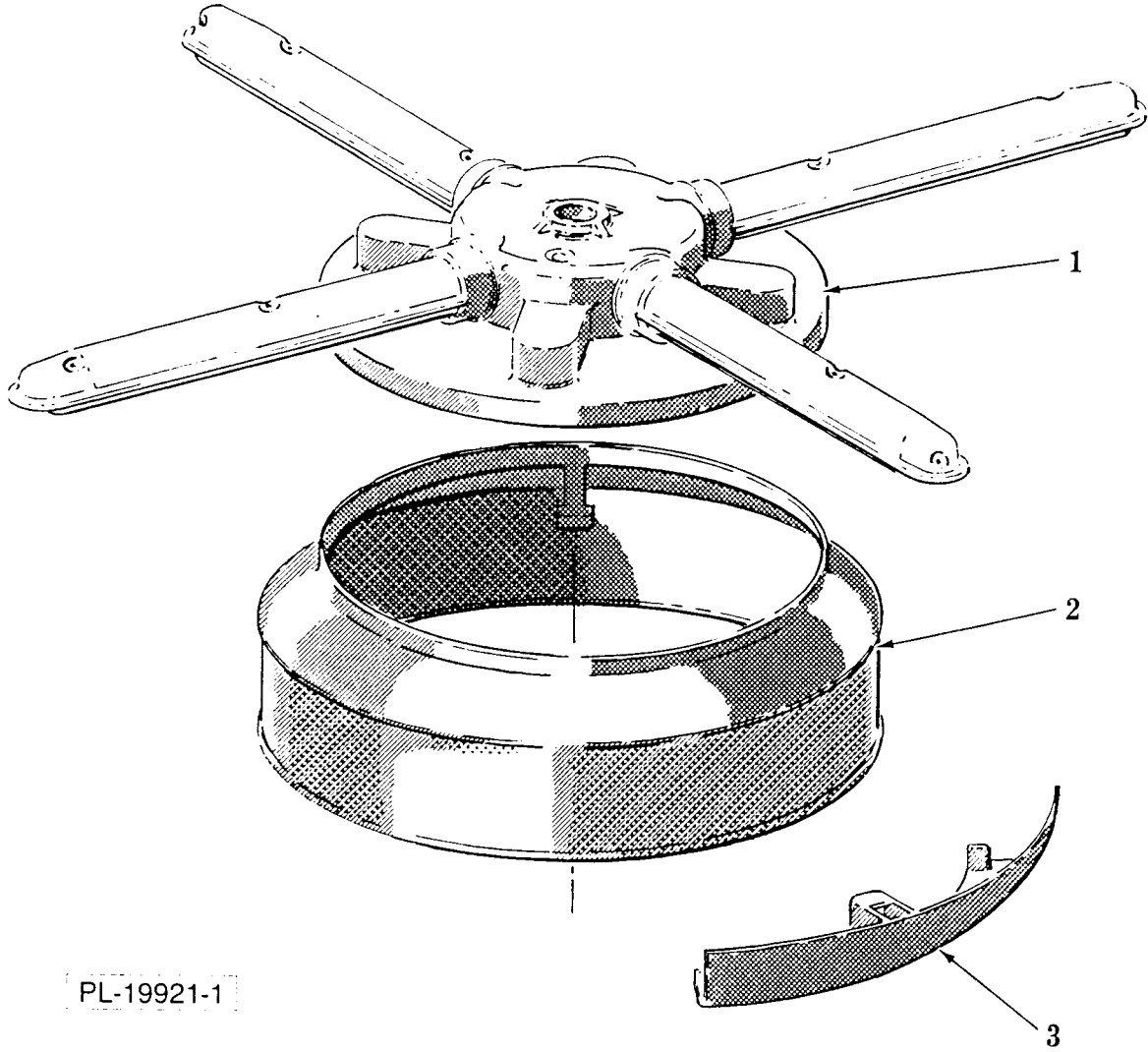
1	242402	Hose- Flexible (Fill Valve to Air Gap)
2	240318	Clamp- Hose
3	242446	Air Gap - Fill Assy. (Incls. items 1 & 2)
4	115840	Gasket- Rubber
5	116198-2	Nut (Fill Air Gap)
6	115747-5	Clamp- Hose
7	242905	Fill Valve Assy. (115 V., 60 Hz.)
8	SD-36-29	Self-Tapping Screw 10-16 x 1/2 Phil. Truss Hd., Type AB
9	241941	Strap (Flexible Connector to Tank)
10	SD-29-12	Self-Tapping Screw 4-40 x 3/4 Phil. Pan Hd., Type F
11	116269	Switch- Overfill Control (115 V., 60 Hz.)
12	116270	Standpipe- Overfill
13	116202	Gasket- Flat
14	115983	Nut- Standpipe
15	240917	Float & Retainer Assy



PL-19920-1

WASH AND DRAIN PUMP UNIT

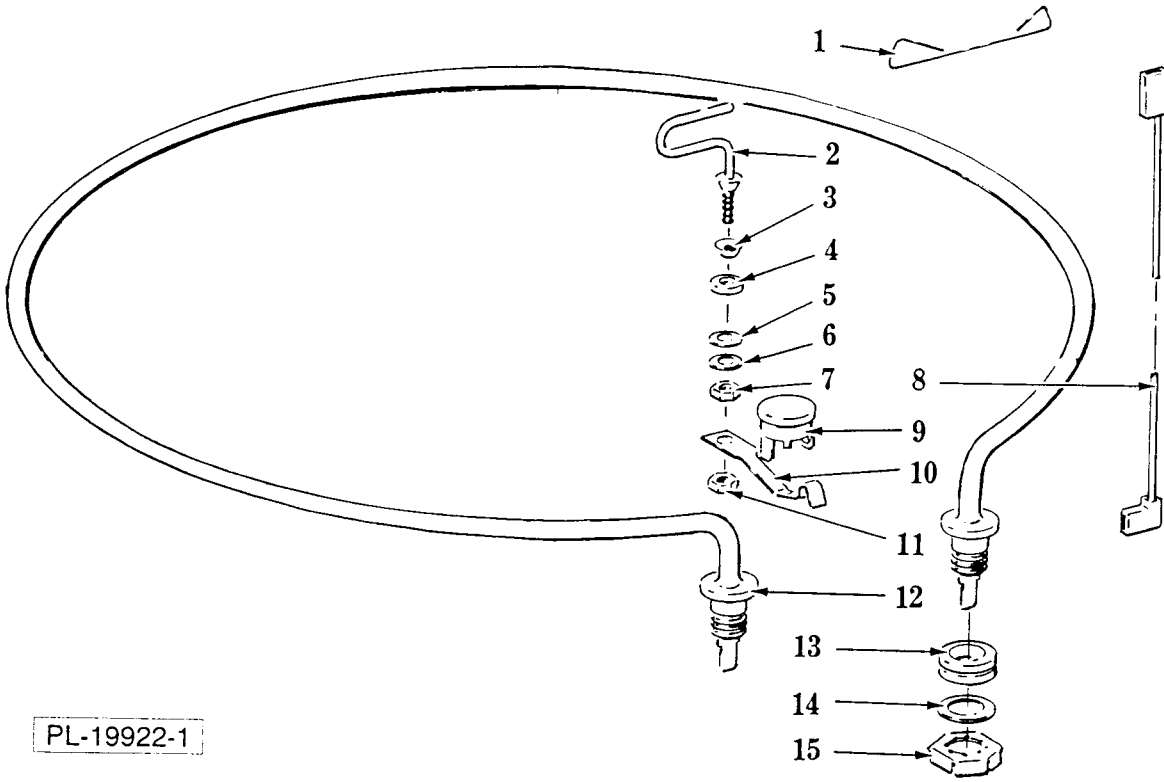
1	241783	Washer - Wear
2	SC-109-58	Mach. Screw 10-24 x 1 Phil. Pan Hd
3	242638	Wash Pump Top Kit (Incls. items 1 & 23)
4	241898	Special Screw 10-32
5	WL-14-7	Lock Washer 10 Ext. Shakeproof
6	83752	Washer- Spring (Impeller)
7	241896	Washer - Impeller
8	67500-107	"O" Ring
9	241908	Wash Impeller Assy
10	241973	Plate - Air Inlet Cover
11	241974	Gasket - Cover Plate
12	242637	Lower Pump Housing Kit (Incls. items 13 & 23)
13	241901	Seal - Wash Pump Ring
14	241938	Fine Strainer
15	SC-93-4	Mach. Screw 8-32 x 1/2 Phil. Pan Hd
16	67500-108	"O" Ring
17	242636	Motor Mounting Plate Kit (Incls. items 18 & 35)
18	115716	Gasket - Motor Mounting Plate
19	241915	Drain Pump Top Assy
20	242108	Gasket - Drain Pump
21	SC-93-4	Mach. Screw 8-32 x 1/2 Phil. Pan Hd
22	240106	Motor Clamp Assy
23	241894	Gasket - Venturi
24	243102	Start Relay Kit (Incls. item 25)
25	SD-19-26	Self-Tapping Screw 8-18 x 1 1/4 Phil. Rd. Hd., Type B
26	242211	Tube- Flexible (Drain)
27	SD-36-29	Self-Tapping Screw 10-16 x 1/2 Phil. Truss Hd., Type AB
28	115747-7	Clamp- Hose (.937" Dia.)
29	242525	Bracket- Check Valve
30	241905	Check Valve Assy
31	242635	Motor, Seal & Gasket Kit (Incls. items 18, 24 & 35)
32	SC-18-71	Mach. Screw 1/4-20 x 1 Pan Hd
33	116003	Connector - Overhead
34	240202-1	Clamp - Hose (1.468" Dia.)
35	242634	Shaft Seal & Gasket Kit (Incls. items 8, 16, 20 & 23)
36	242097	Impeller - Drain
37	240202-3	Clamp - Hose (1" Dia.)
	241936	Pump System Assy. (Incls. items 2 thru 21, 23, 31, 32, 35 &
36)		



PL-19921-1

LOWER WASH ARM AND STRAINER

1	241917	Wash Arm Assy
2	241934	Strainer- Fine
3	241939	Strainer- Coarse

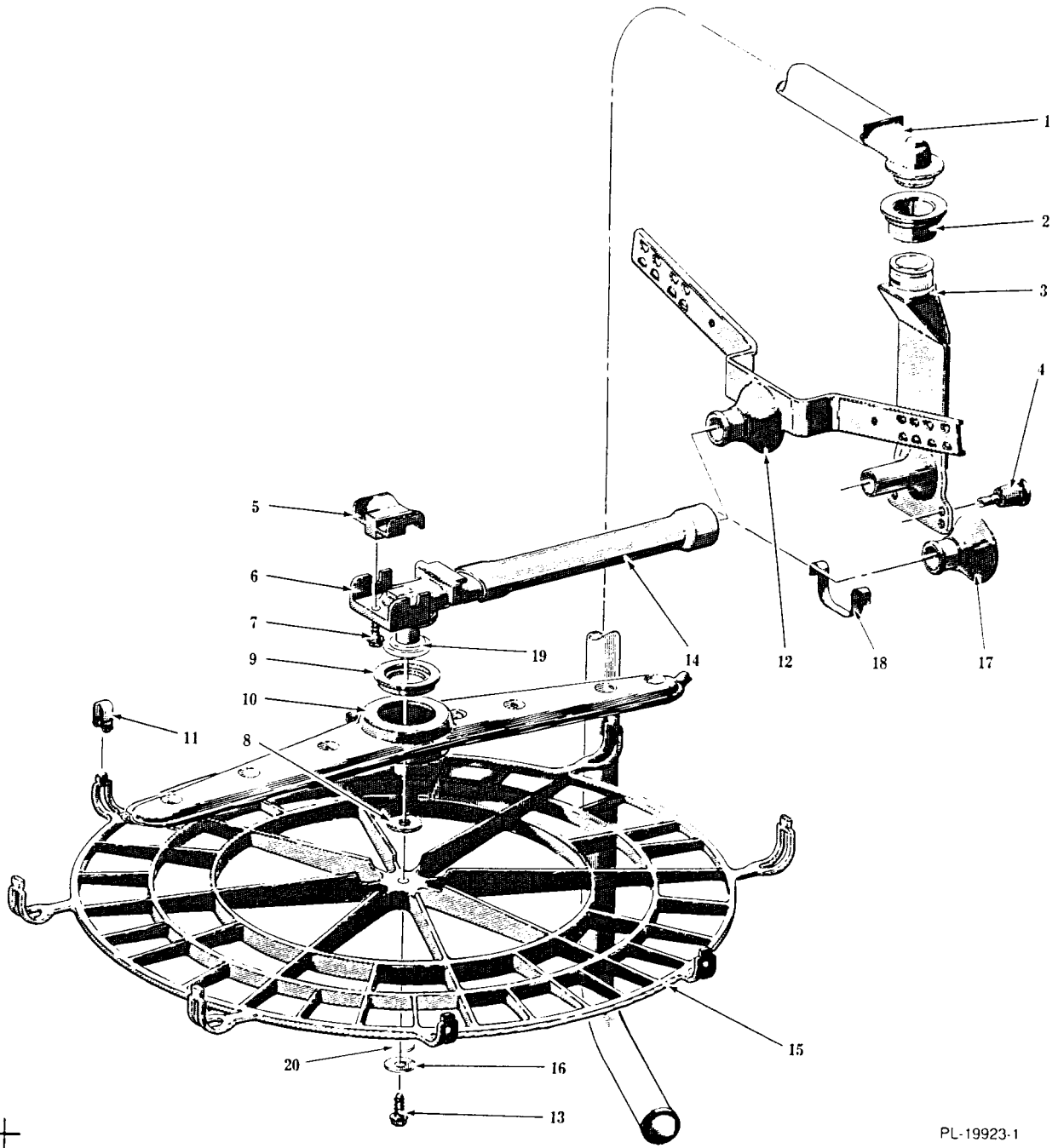


PL-19922-1

HEAT UNIT

1	243148	Spring- Heater Retainer
2	242958	Hook- Heater Element
3	WC-5-8	Washer- Countersunk
4	78397	Washer- Sealing
5	WS-19-17	Washer
6	WS-23-5	Washer
*7	NS-40-6	Lock Nut 10-32 Hex
*8	243056	Lead (Thermostat to Heater)
*9	243044	Thermostat- Limiter
*10	242961	Bracket- Thermostat
*11	NS-40-6	Lock Nut 10-32 Hex
12	242951	Element- Heater
13	241135-3	Grommet- Heater Element
14	242963	Washer- Heater Element
15	242965	Nut- Heater Element
	243041	Heater Kit (Service) (Incls. items 12 thru 15)

*Not used on KDB-21.

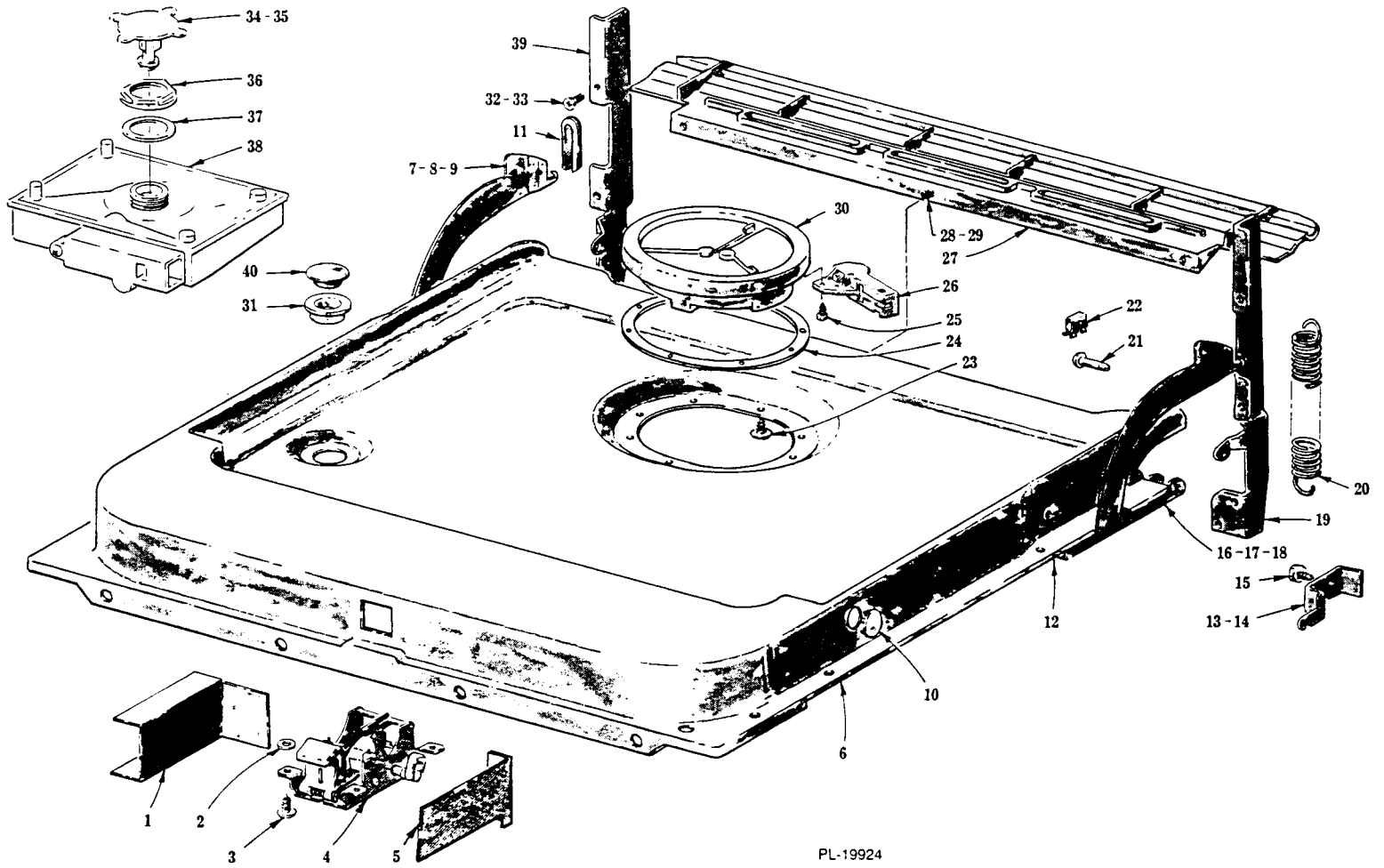


+

PL-19923-1

UPPER WASH/RINSE UNIT

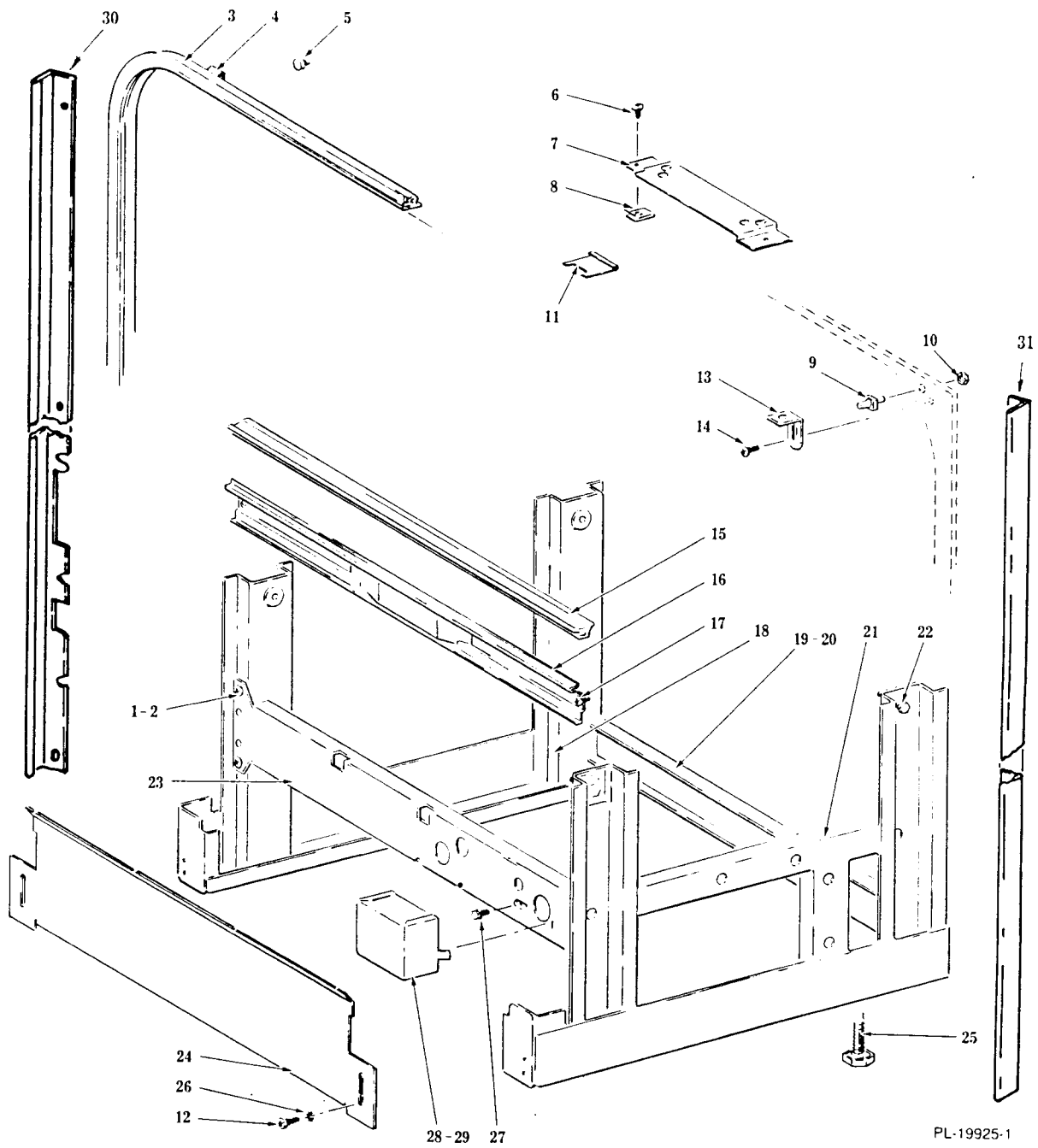
1	241439	Tube & Connector Assy
2	241546	Connector- Vertical Conduit
3	241392	Conduit- Vertical
4	241286	Retainer- Conduit
5	241105	Retainer- Manifold
6	241051	Manifold- Upper Arm
7	116277	Special Screw - Hex Washer Hd
8	241332	Bearing- Arm (Bottom)
9	241095	Bearing- Arm (Top)
10	241055	Wash/Rinse Arm Assy
11	241107	Clip- Arm Guard (KDC-61A & KDI-21A)
12	115958	Receiver- Manifold Tube (KDC-61A)
13	116277	Special Screw - Hex Washer Hd
14	116029	Tube (Manifold to Receiver)
15	241056	Guard - Arm (KDC-61A & KDI-21A)
16	241331	Washer
17	240968	Receiver- Manifold (KDB-21, KDC-21A & KDI-21A)
18	240979	Support- Receiver (KDB-21, KDC-21A & KDI-21A)
19	242263	Spacer- Upper Rack (KDB-21 & KDC-21A)
20	242264	Washer(KDB-21 & KDC-21A)



PL-19924

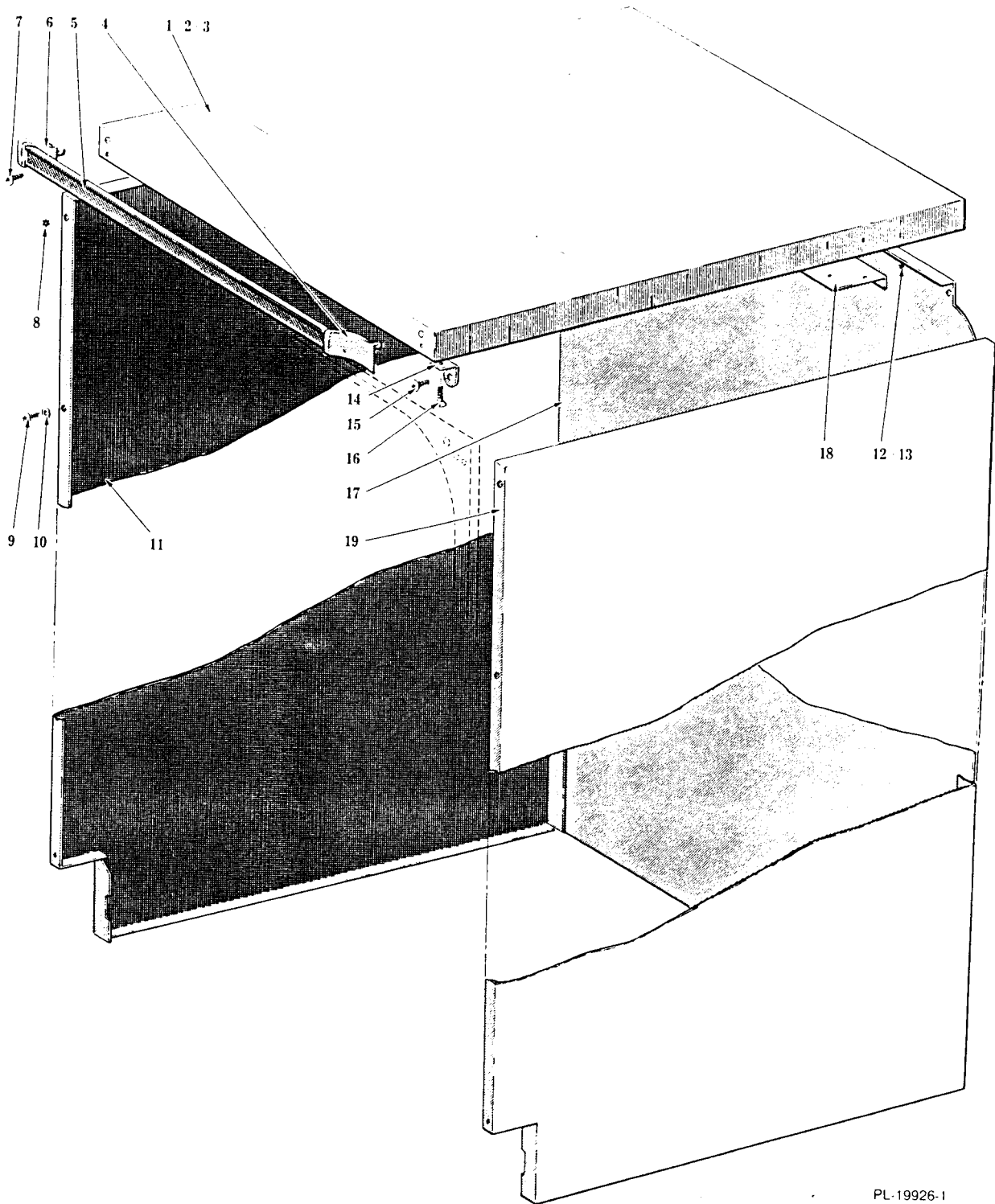
DOOR AND LATCH UNIT

1	116174	Cover- Wiring Harness
2	WS-2-51	Washer
3	SD-17-14	Self-Tapping Screw 10-16 x 1/2 Phil. Truss Hd., Type AB
4	116022-2	Latch Mechanism Assy
5	240377	Insulation- Switch
6	241119	Inner Door Assy
7	WS-28-15	Washer (Rubber)
8	SC-66-7	Mach. Screw 10-32 x 5/16 Phil. Truss Hd
9	115977-3	Bracket- L.H. Door Stop
10	PB-3-12	Plug Button
11	88044	Bearing- Door Stop Insert
12	241970	Vapor Shield Kit
13	240028	Bracket- R.H. Spring Mounting
14	240027	Bracket- L.H. Spring Mounting (Not Shown)
15	A-21-8	Screw & Washer Assy. 10-32 x 3/8 Phil. Hex Hd., Type AB
16	115978-3	Bracket- R.H. Door Stop
17	SC-66-7	Mach. Screw 10-32 x 5/16 Phil. Truss Hd
18	WS-28-15	Washer (Rubber)
19	115970-3	Bracket- R.H. Hinge
20	241342	Spring - Door Co-Balance
21	115910	Pin- Hinge
22	115968	Clip- Hinge Pin Retaining
23	240333	Screw & Washer Assy
24	116065	Gasket- Detergent Dispenser
25	SD-13-11	Self-Tapping Screw 8-18 x 1/2 Phil. Pan Hd., Type BT
26	241225	Bimetal Assy
27	115053-1	Baffle - Lower
28	SD-17-42	Self-Tapping Screw 8-18 x 1/2 Phil. Truss Hd., Type AB
29	240471	Cap
30	115152	Detergent Dispenser & Gasket Assy. (115 V., 60 Hz.) (Incls. item 24)
31	240163	Gasket- Plug Button
32	WS-28-15	Washer (Rubber)
33	240388	Mach. Screw 10-32 x 1/2 Phil. Truss Hd., CA Pt. "Taptite"
34	241163	Fill Hole Plug Assy. (Incls. item 35)
35	241101	Washer - Fill Hole Plug
36	116198-2	Nut - Rinse Agent Dispenser
37	115840	Gasket- Rinse Agent Dispenser
38	241137	Rinse Agent Dispensing Valve
39	115971-3	Bracket- L.H. Hinge
40	240162	Plug Button (Mach. W/O Rinse Agent)
	242649	Inner Door (Service)



FRAME AND MISC. ITEMS

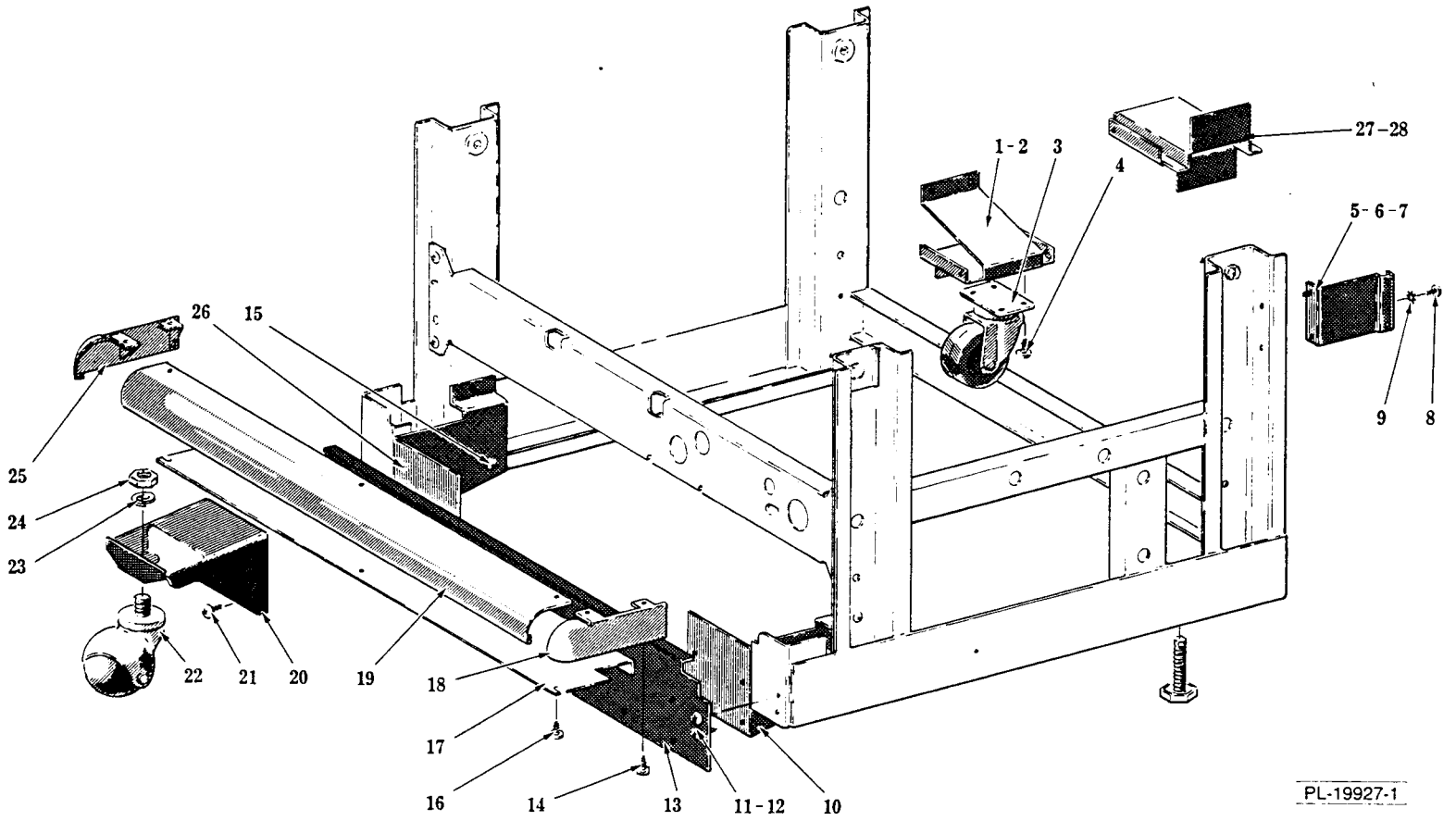
1	241837	Short Frame Assy. (Incls. items 2, 18, 19, 20, 21 & 23)
2	SA-11-8	Screw & Lock Washer Assy. 10-16 x 5/8 Phil. Truss Hd., Type AB
3	116115	Door Seal Assy. (Incls. item 4)
4	116010	Clip- Seal
5	116101	Bumper- Door
6	SD-17-14	Self-Tapping Screw 10-16 x 1/2 Phil. Truss Hd., Type AB
7	116247	Protector- Upper Water Inlet
8	240423	Speed Nut 10, Type U
9	242997	Actuator- Interlock Switch
10	NS-47-28	Lock Nut 3/16 Palnut
11	81218	Keeper - Latch
12	SD-26-25	Self-Tapping Screw 10-16 x 3/8 Phil. Truss Hd., Type AB
13	240412-1	Bracket - Top Panel Anchor
14	SD-17-13	Self-Tapping Screw 10-16 x 1/2 Phil. Truss Hd., Type AB
15	240649	Channel - Evaporation
16	115912	Support- Evaporation Channel
17	240388	Mach. Screw 10-32 x 1/2 Phil. Truss Hd., CA Pt. "Taptite"
18	241852	Frame Assy. (L.H.)
19	241753	Cross Frame - Rear
20	SA-11-8	Screw & Lock Washer Assy. 10-16 x 5/8 Phil. Truss Hd., Type AB
21	241851	Frame Assy. (R.H.)
22	SD-33-90	Self-Tapping Screw 1/4-20 x 1/2 Hex Washer Hd., Type TT
23	115370	Cross Frame - Front
24	115957	Kick Board
25	241857	Foot - Leveling (5/16-18 Thd.)
26	WL-7-12	Lock Washer 10 Ext. Shakeproof
27	SD-12-38	Self-Tapping Screw 10-32 x 3/8 Indented Hex Washer Hd., Type T
28	115371	Enclosure - Elec. Supply
29	SD-17-41	Self-Tapping Screw 8-18 x 1/2 Phil. Bind. Hd., Type AB
	243040	Tank & Frame Assy. (Service)
30	115903	Trim Tank L.H.
31	115904	Trim Tank R.H.



TOP AND PANELS
(KDC-61A)

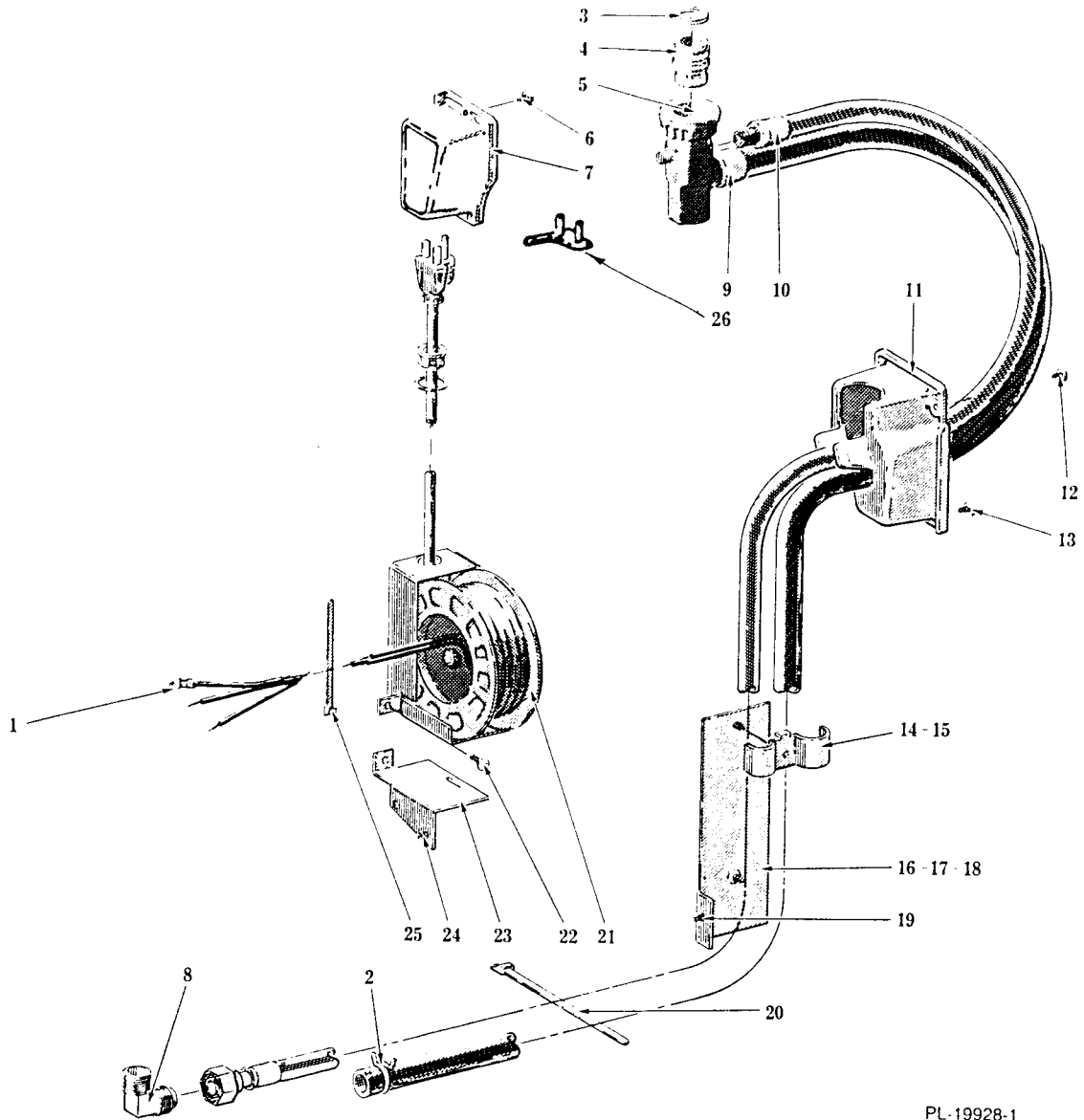
PL-19926-1

1	242686-1	Wood Top & Insulation Assy. (W/Pull Bar) (Incls. items 3 thru 7)
2	241686-2	Wood Top & Insulation Assy. (W/O Pull Bar) (Incls. item 3)
3	SW-5-25	Wood Screw 10-13 x 3/4 Phil. Rd. Hd
4	116298	End Cap - Guide Bar (R.H.)
5	116297	Bar - Guide
6	116299	End Cap - Guide Bar (L.H.)
7	SW-9-10	Wood Screw 10-13 x 3/4 Phil. Oval Hd
8	WL-7-12	Lock Washer 10 Ext. Shakeproof
9	SD-17-13	Self-Tapping Screw 10-16 x 1/2 Phil. Truss Hd., Type AB
10	WS-19-34	Washer (Fiber)
11	242004-4	Side Panel (L.H.) (Almond)
	242004-6	Side Panel (L.H.) (Harvest Tone)
	242004-2	Side Panel (L.H.) (White)
12	SD-17-9	Self-Tapping Screw 10-16 x 5/16 Phil. Truss Hd., Type AB
13	WS-19-34	Washer
14	242125	Bracket - Top Panel Anchor
15	SD-17-13	Self-Tapping Screw 10-16 x 1/2 Phil. Truss Hd., Type AB
16	SW-10-4	Wood Screw 10-13 x 3/4 Phil. Flat Hd
17	241992-2	Panel - Rear (Almond)
18	241997	Bracket - Rear Panel Anchor
19	242004-3	Side Panel (R.H.) (Almond)
	242004-5	Side Panel (R.H.) (Harvest Tone)
	242004-1	Side Panel (R.H.) (White)



**CASTER UNIT
(KDC-61A)**

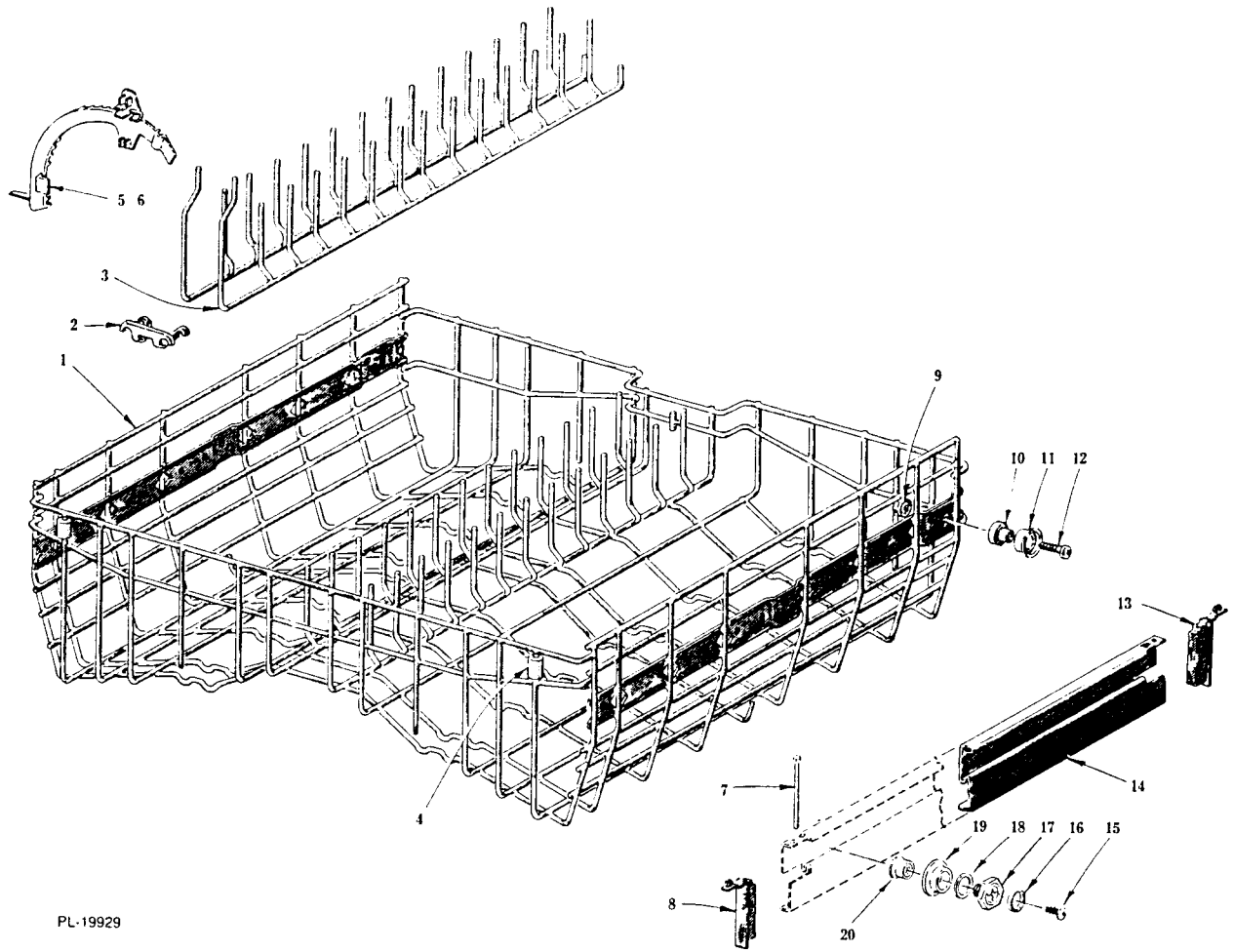
1	242003	Bracket- Rear Caster (L.H.)
2	SD-17-14	Self-Tapping Screw 10-16 x 1/2 Phil. Truss Hd., Type AB
3	104540	Caster- Rear
4	SD-17-14	Self-Tapping Screw 10-16 x 1/2 Phil. Truss Hd., Type AB
5	116223	Bracket- Side Panel Mounting
6	SD-17-14	Self-Tapping Screw 10-16 x 1/2 Phil. Truss Hd., Type AB
7	WL-7-12	Lock Washer 10 Ext. Shakeproof
8	SD-17-9	Self-Tapping Screw 10-16 x 5/16 Phil. Truss Hd., Type AB
9	WL-7-12	Lock Washer 10 Ext. Shakeproof
10	242001-2	Support - Front Caster Bracket (R.H.)
11	SD-26-25	Self-Tapping Screw 10-16 x 3/8 Phil. Truss Hd., Type AB
12	WL-7-12	Lock Washer 10 Ext. Shakeproof
13	242000	Kickboard
14	SD-22-33	Self-Tapping Screw 10-16 x 3/8 Ind. Hex Hd., Type AB
15	SD-17-14	Self-Tapping Screw 10-16 x 1/2 Phil. Truss Hd., Type AB
16	SD-17-4	Self-Tapping Screw 6-20 x 3/8 Phil. Rd. Hd., Type AB
17	241999	Barrier - Front Panel
18	240010	End Cap - Caster Trim (R.H.)
19	240009	Trim - Front Caster
20	116295	Bracket- Front Caster
21	SD-17-18	Self-Tapping Screw 10-16 x 1/2 Phil. Truss Hd., Type AB
22	116273	Caster- Front
23	WL-4-4	Lock Washer 3/8 Light
24	NS-17-16	Jam Nut 3/8-16 Hex Fin
25	240011	End Cap - Caster Trim (L.H.)
26	242001-1	Support- Front Caster Bracket (L.H.)
27	242999	Bracket- Rear Caster (R.H.)
28	SD-17-14	Self-Tapping Screw 10-16 x 1/2 Phil. Truss Hd., Type AB



PL-19928-1

FILL HOSE AND CORD
(KDC-61A)

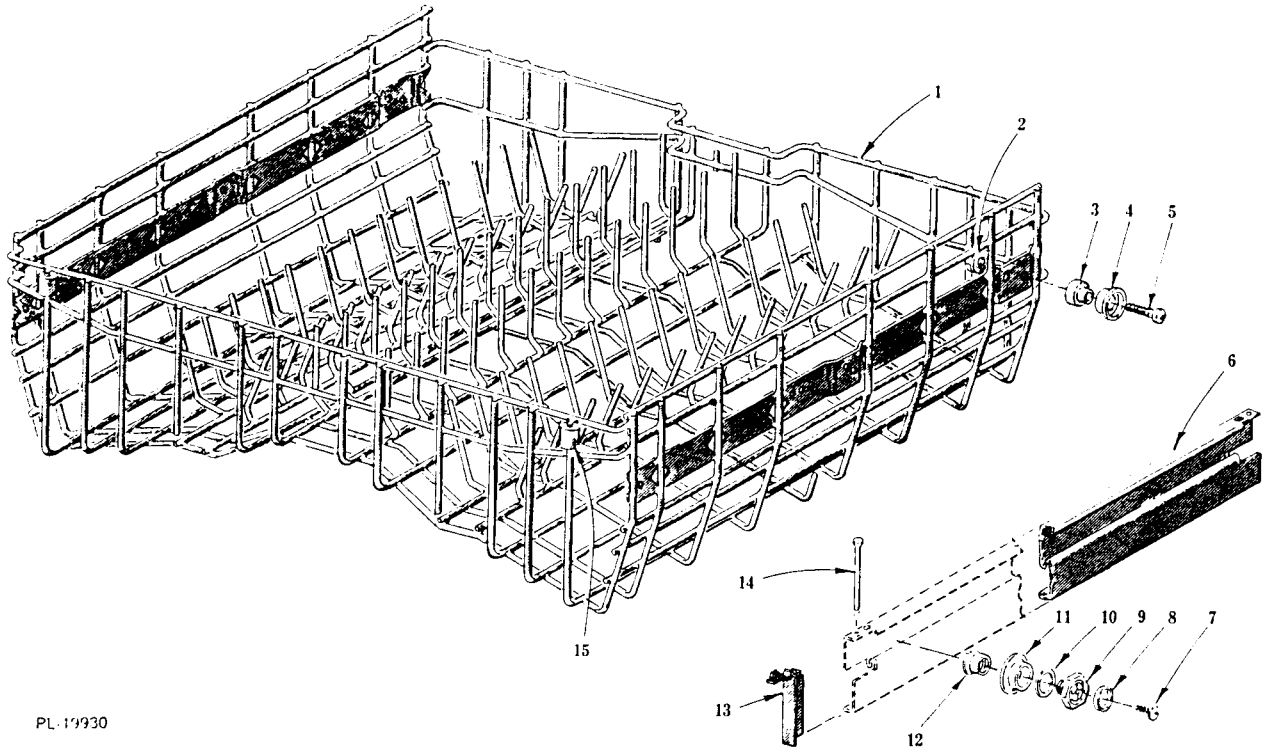
1	SD-17-12	Self-Tapping Screw 10-16 x 1/2 Phil. Rd. Hd., Type AB
2	240319	Clamp- Hose
3	110553	Washer Kit
4	110552	Aerator & Connector Assy. (Incls. item 3)
5	89038	Gasket- Seal ("U" Section)
6	SD-22-37	Self-Tapping Screw 6-20 x 3/8 Phil. Oval Hd., Type AB
7	111465	Housing- Power Cord
8	240872	Elbow- Tube Fitting
9	106955-2	Coupler, Drain Hose & Ferrule Assy. (Incls. item 5)
10	107113	Fill Hose, Sleeve & Nut Assy
11	111464	Housing- Hose Coupler
12	SD-26-14	Self-Tapping Screw 6-20 x 5/8 Phil. Oval Hd., Type AB
13	SD-22-37	Self-Tapping Screw 6-20 x 3/8 Phil. Oval Undercut Hd., Type AB
14	105662	Clamp- Hose
15	SD-17-11	Self-Tapping Screw 10-16 x 3/8 Phil. Truss Hd., Type AB
16	241998	Bracket- Hose Anchor
17	73017	Washer- Trim
18	SD-22-27	Self-Tapping Screw 6-20 x 3/8 Phil. Oval Undercut Hd., Type AB
19	SD-17-14	Self-Tapping Screw 10-16 x 1/2 Phil. Truss Hd., Type AB
20	241941	Wire Tie (8") (Fill Hose)
21	242110	Cord Reel Assy. (Service)
22	SD-17-13	Self-Tapping Screw 10-16 x 1/2 Phil. Truss Hd., Type AB
23	241996	Bracket- Cord Reel Mounting
24	SD-17-14	Self-Tapping Screw 10-16 x 1/2 Phil. Truss Hd., Type AB
25	240318	Strap- Retaining (Cord)
	240936	Coupler Service Kit
26	113715	Guide-Locking



PL-19929

UPPER RACK AND TRACK UNIT
(KDI-21A & KDB-21SE)

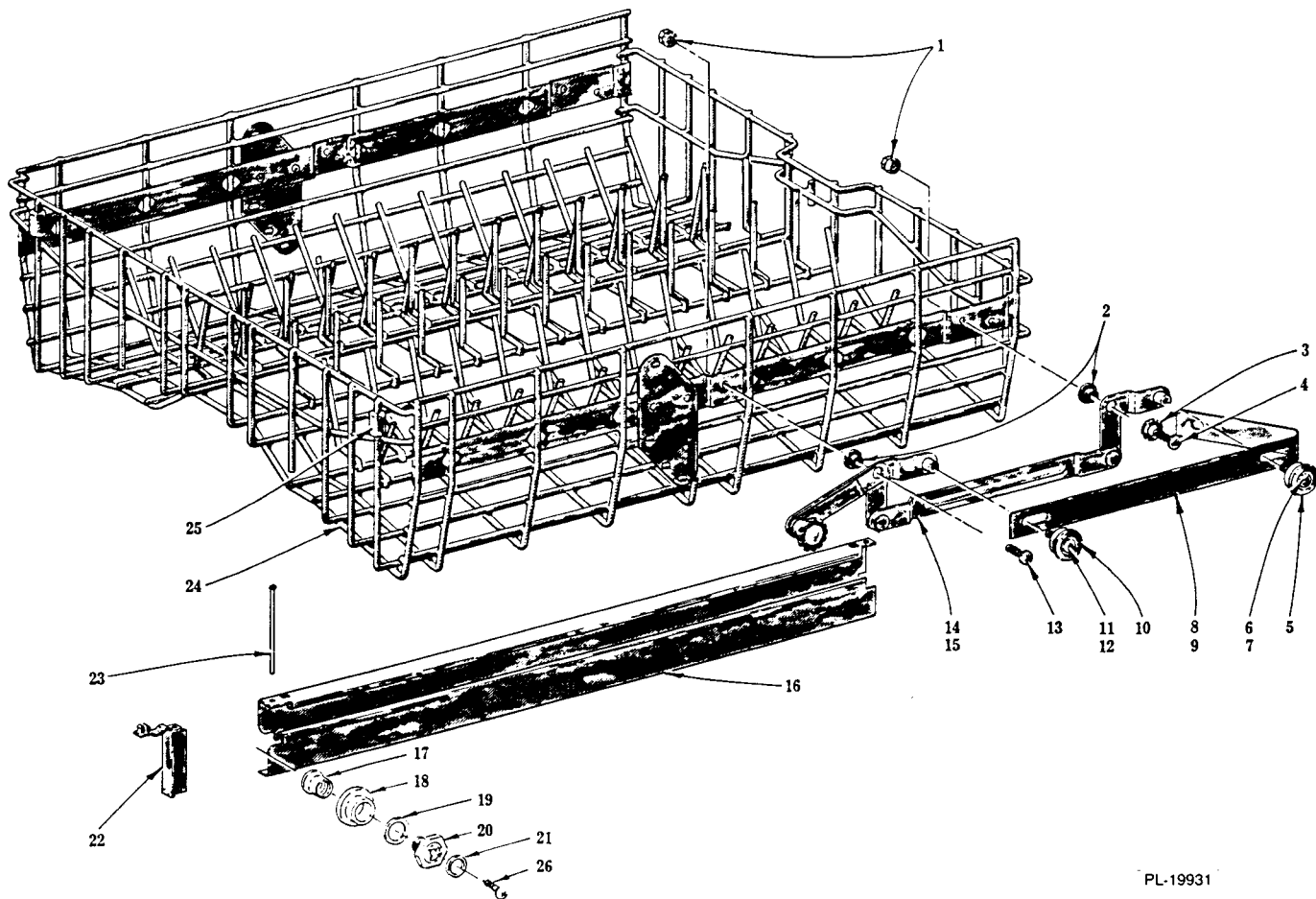
1	241196	Upper Rack Assy. (Incls. items 2 thru 6 & 9 thru 12) / (KDI-21A
	241131	Upper Rack Assy. (KDB-21SE)
2	101685	Clip - Partition Retaining
3	115948	Partition - Upper Rack
4	240228	Bumper - Upper Rack
5	108783	Quadrant- Flexo Divider (L.H.)
6	108784	Quadrant- Flexo Divider (R.H.) (Not Shown)
7	89746	Stud- Bumper Retaining
8	240288	Bumper- Rack Track
9	114054	Nut- Roller
10	241035	Bearing & Spacer - Rack Roller
11	89738	Roller- Upper Rack Track
12	SD-32-14	Self-Tapping Screw 10-16 x 1 Phil. Pan Hd., Type B
13	240288	Bumper- Rack Track
14	240989	Track- Rack
15	SD-19-23	Self-Tapping Screw 10-16 x 3/8 Phil. Pan Hd., Type B
16	241950	Gasket- Rack Stud
17	241952	Stud- Rack Roller
18	241954	Washer- Roller Spacing
19	241951	Roller- Rack Track
20	241953	Bushing- Rack Roller



PL-19930

UPPER RACK AND TRACK UNIT
(KDB-21 & KDC-21A)

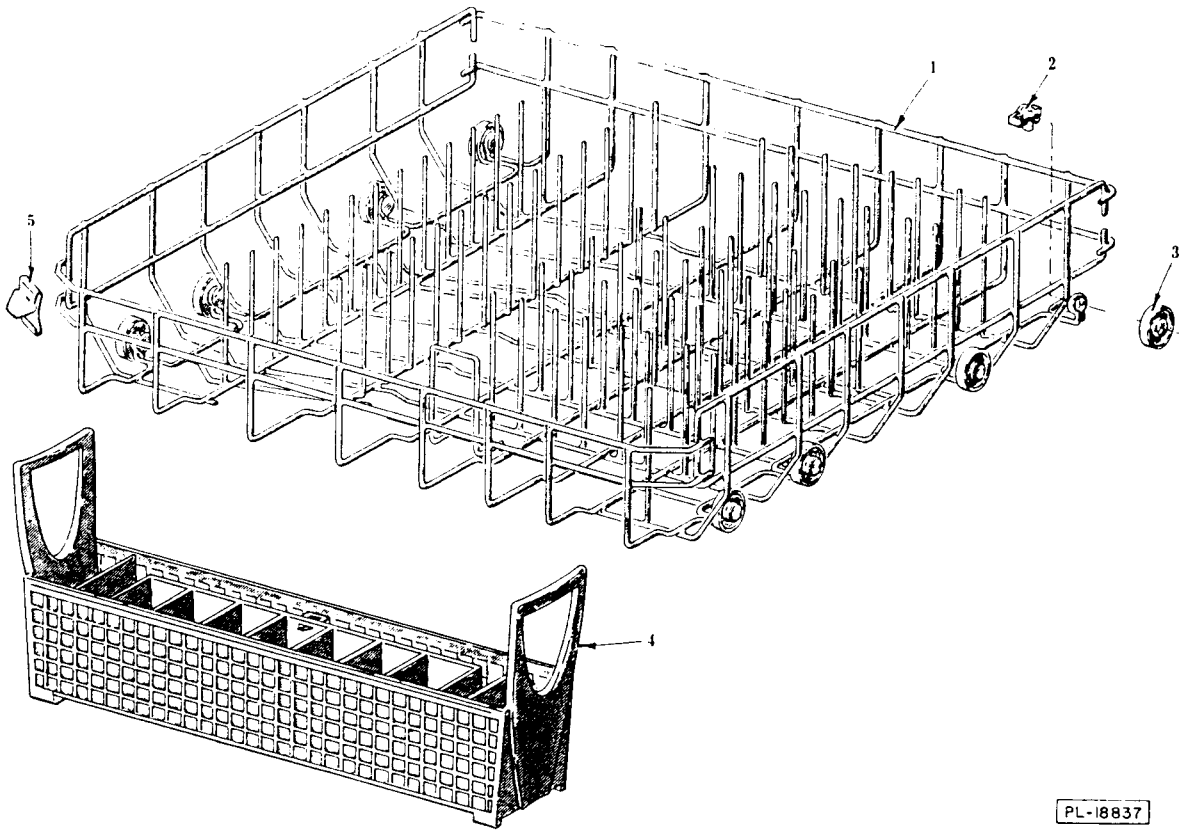
1	242257	Upper Rack Assy. (Incls. items 2, 3, 4, 5 & 15)
2	114054	Nut- Roller
3	241035	Bearing & Spacer - Rack Roller
4	89738	Roller- Upper Rack Track
5	SD-32-14	Self-Tapping Screw 10-16 x 1 Phil. Pan Hd., Type B
6	240989	Track - Rack
7	SD-19-23	Self-Tapping crew 10-16 x 3/8 Phil. Pan Hd., Type B
8	241950	Gasket- Rack Stud
9	241952	Stud- Rack Roller
10	241954	Washer- Roller Spacing
11	241951	Roller- Rack Track
12	241953	Bushing- Rack Roller
13	240288	Bumper- Rack Track
14	89746	Stud- Bumper Retaining
15	240228	Bumper- Upper Rack



PL-19931

UPPER RACK AND TRACK UNIT
(KDC-61A)

1	114054	Nut- Roller
2	241034	Bearing Spacer - Rack Adjusting
3	241025	Washer- Rack
4	SD-32-20	Self-Tapping crew 10 x 5/8 Phil. Pan Hd., Type B
5	116008	Roller- Upper Rack
6	SC-69-10	Mach. Screw 8-32 x 1/4 Phil. Pan Hd. "Nylok"
7	WS-28-14	Washer
8	116114	Lift- Receiver (R.H.)
9	116113	Lift- Receiver (L.H.) (Not Shown)
10	116008	Roller- Upper Rack
11	SC-69-10	Mach. Screw 8-32 x 1/4 Phil. Pan Hd. "Nylok"
12	WS-28-14	Washer
13	SD-32-20	Self-Tapping crew 10 x 5/8 Phil. Pan Hd., Type B
14	116155	Adjustable rack Track Mech. (R.H.)
15	116154	Adjustable rack Track Mech. (L.H.) (Not Shown)
16	240989	Track - Upper Rack
17	241953	Bushing- Rack Roller
18	241951	Roller- Rack Track
19	241954	Washer- Roller Spacing
20	241952	Stud- Rack Roller
21	241950	Gasket Rack Stud
22	240288	Bumper- Upper Rack Track
23	89746	Stud - Bumper Retaining
24	241245	Upper Rack Assy. (Incls. item 25) / (KDC-61A
	241140	Upper Rack Assy. (KDC-21AD & KDI-21AD)
25	240228	Bumper- Upper Rack
26	SD-19-23	Self-Tapping Screw 10-16 x 3/8 Phil. Pan Hd., Type B



PL-18837

LOWER RACK UNIT

1	116157	Lower Rack Assy. (Incls. item 2 & 3)
2	240682	Axle- Lower Rack
3	240683	Wheel- Lower Rack
4	101296	Basket- Silverware
5	241244	Bumper- Lower Rack